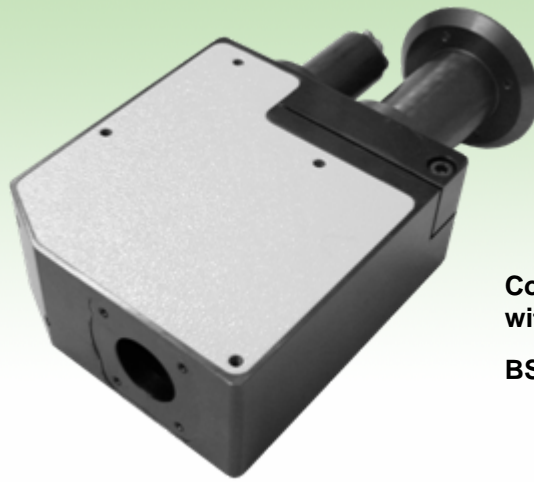


Family of Numerical Aperture Converters

NAC-6



Collimation Unit
with Beamsplitter

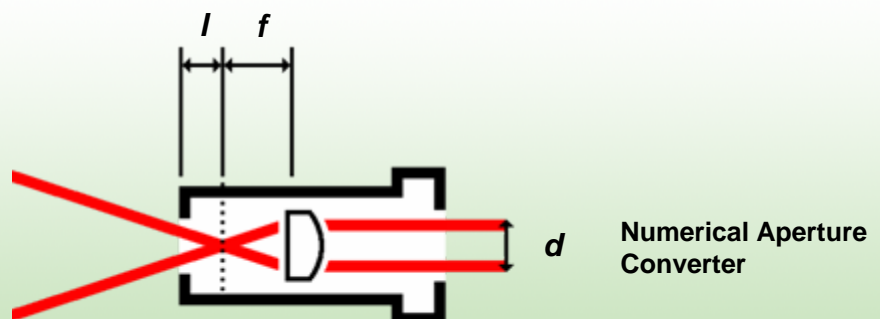
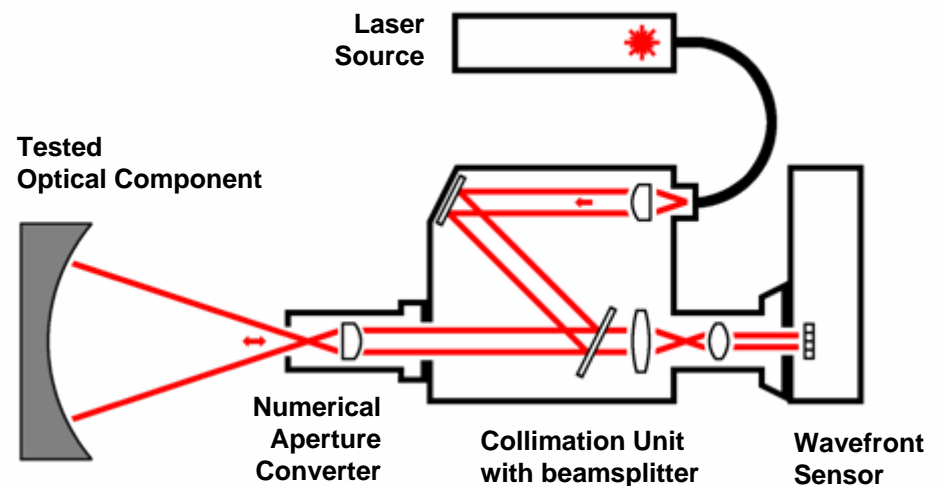
BS-6-32

- The set of accessories allows customers to compose various schemes for optical inspection.

BS-6-32 - beamsplitter and collimation module is utilized for collimating irradiation of single mode diode laser and splitting it for illumination of the element under test. The module provides also an imaging of input pupil of the WFS onto the element under test.

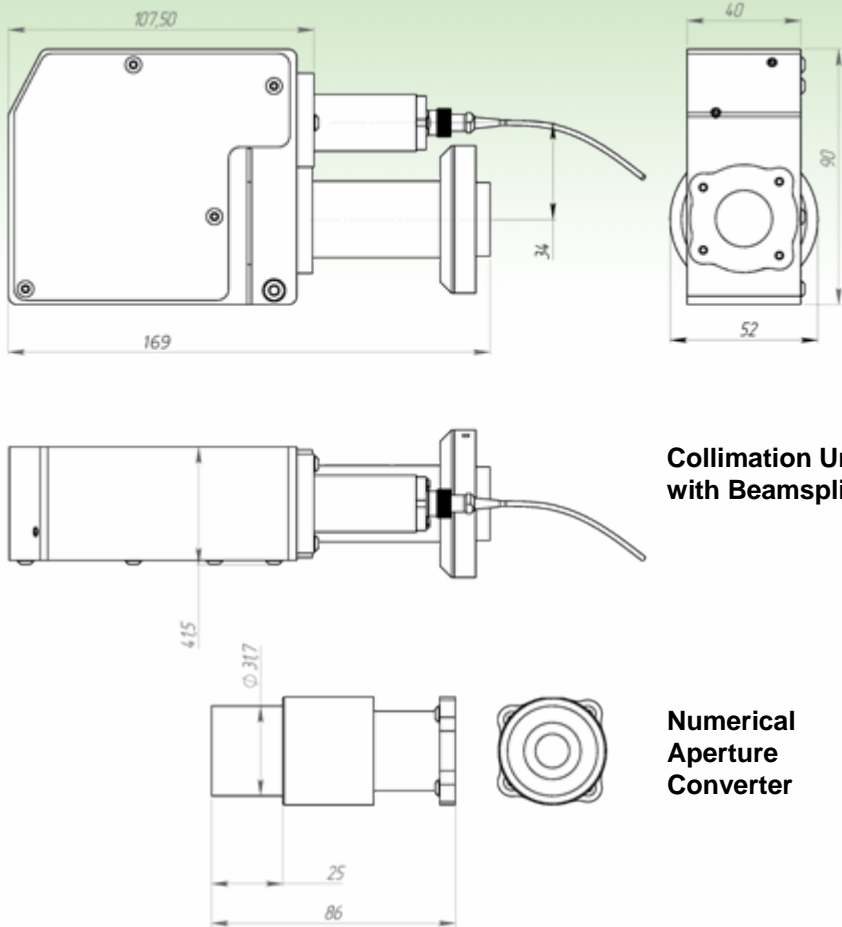
NAC-6 – the family of numerical aperture correctors are required for inspection of spherical and aspherical surfaces and components. Please, refer the schematic drawings for specification.

SCHEME OF THE OPTICAL COMPONENTS DIAGNOSTICS SYSTEM





MECHANICAL DIMENSIONS



Collimation Unit
with Beamsplitter

Numerical
Aperture
Converter

AVAILABLE COMPONENTS

Numerical Aperture Converter

Identity	<i>l</i> , mm	<i>f</i> , mm	<i>d</i> , mm	f-number
NAC-6-2.3	25.4	14	6	2.3
NAC-6-3.3	25.4	20	6	3.3
NAC-6-4.2	25.4	25	6	4.2
NAC-6-8.3	25.4	50	6	8.3

Collimation Unit with beamsplitter

Identity	Splitting ratio, %
BS-6-32	50

Laser Source

LS-FC-1

Wavefront Sensor

Identity	Number of points for analysis	Dimensions, mm
Shah-0620(A)	1500	80×60×40
Shah-0620(B)	140	80×60×40
Shah-0530	1500	30×30×40